

FL2103D JA8
 Vanity, CEC Listed



Features

Housing

Die-formed Cold-rolled Steel
 Finish Option: -62 Satin Nickel, -30 Oil Rubbed Bronze, -06 White

Optical

Shade: High Transmission Acrylic Create Excellent Light Distribution and Uniformity

Electrical

LED Driver: 120V ~ 277V, 0 ~ 10V Dimming Type
 Min. Dimming Level: 3%
 High Power Factor (> 0.98), Low THD (< 10%)

Lamp

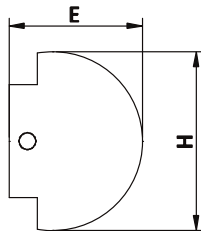
LED Type: Built-in (Color Temperature Option – 3500K, 4000K)
 LM80, TM21 : 60,000 hours Rating
 LED Rated Life: > 36000 hours
 LED CRI > 90 per JA8 Standard
 Flicker Free: Meets JA10 Standard

Certifications

ETL/cETL Listed, Energy Star, CEC Listed

Warranty

5 Years Warranty on Driver and LED Module



LED Type

Model	Input Voltage	Input Wattage	LED CT / CRI	Lumen (TYP)	CRI	Finish	Dimension (L x W X H)	Energy Star
FL2103D-3000K JA8	120V - 277V	24W	3000K	1980	>90	Satin Nickel	24.5" x 5.7" x 4.5"	Yes